

## SPECIFICATIONS SHEET

**PRODUCT TYPE : SELF DRIVE PIEZO TRANSDUCER**

**PRODUCT SERIES : BRP4013P-30**

**DESCRIPTION : PZ TRANSDUCER 12VDC PC (241R) RoHS SP**

**1) PIEZO ELEMENT BLACK COATING 2) 2.5 mmPL**

**COLOR : BLACK**

**ELECTRICAL SPECIFICATIONS**

| MODEL NO.               |                | BRP4013P-30       |
|-------------------------|----------------|-------------------|
| OPERATING VOLTAGE RANGE | ( VDC )        | 6.0 ~ 16.0        |
| RATED VOLTAGE           | ( VDC )        | 12.0              |
| + MAX. RATED CURRENT    | ( mA )         | 30.0 ( 9.0 VDC )  |
| + MIN. SOUND OUTPUT     | ( dBA/ 25 cm ) | 105.0             |
| + FREQUENCY             | ( Hz )         | 3250 ± 250        |
| CAPACITANCE AT 1000 Hz  | pF             | Cm : 32000 ± 30 % |
| CAPACITANCE AT 1000 Hz  | pF             | Cf : 4400 ± 30 %  |
| TONE NATURE             |                | SINGLE            |
| OPERATING TEMPERATURE   | ( °C )         | - 20.0 ~ + 70.0   |
| STORAGE TEMPERATURE     | ( °C )         | - 20.0 ~ + 85.0   |
| TERMINAL                |                | PIN               |
| HOUSING MATERIAL        |                | PC ( 241R )       |
| WEIGHT                  | ( g )          | 9.0               |

+ Value applying at rated voltage

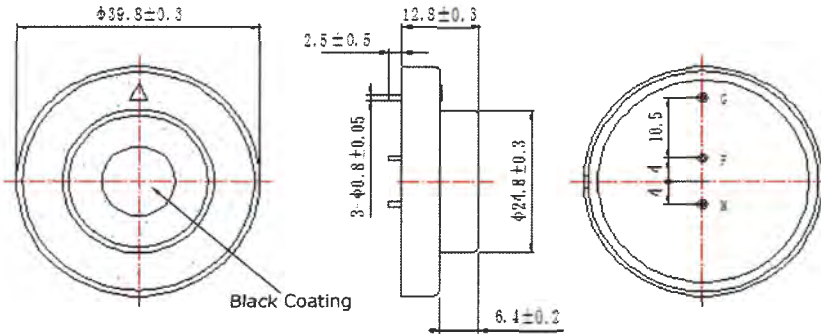
**DIMENSIONS**

UNIT : mm Tolerance : ± 0.5 mm

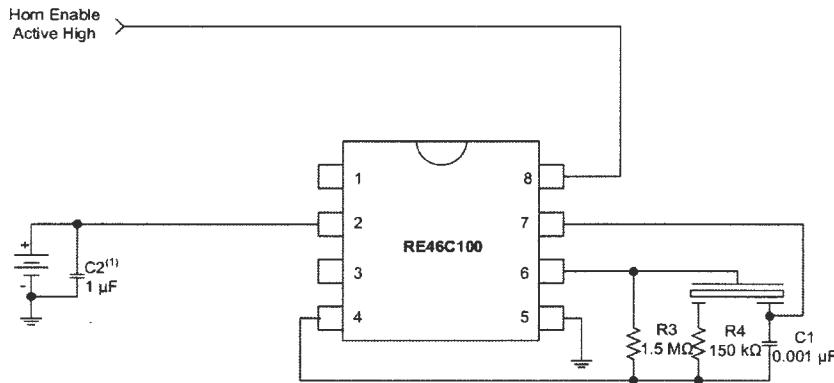
TOP VIEW

SIDE VIEW

BOTTOM VIEW



**Testing Circuit**



| Modify :   | Date :       | By : |
|--|--------------|------|
| Add Capacitance value :<br>Capacitance ( Cm ) : 32000 pF ± 30 % at 1000 Hz<br>Capacitance ( Cf ) : 4400 pF ± 30 % at 1000 Hz | 27-Oct.-2015 | Wai  |
|  |              |      |

Approved By : ST  
 Date : 27-Oct.-2015

Prepared By : VC  
 Date : 27-Oct.-2015