

SPECIFICATIONS SHEET

PRODUCT TYPE : MECHANICAL BUZZER

PRODUCT SERIES : BS2316P-C-B

DESCRIPTION : MC BUZZER SINGLE 12VDC PIN ABS

COLOR : GRAY

ELECTRICAL SPECIFICATIONS

| MODEL NO. | <i>BS2316P-12-C-B</i> | |
|------------------------------------|-----------------------|--|
| OPERATING VOLTAGE RANGE (VDC) | 8.0 ~ 16.0 | |
| RATED VOLTAGE (VDC) | 12.0 | |
| * MAX. RATED CURRENT (mA) | 20.0 | |
| MIN. TRIGGER CURRENT (mA) | 5.0 | |
| * MIN. SOUND OUTPUT (dBA/ 30 cm) | 70.0 | |
| * FREQUENCY (Hz) | 400 ± 100 | |
| TONE NATURE | SINGLE | |
| OPERATING TEMPERATURE (°C) | - 20.0 ~ + 70.0 | |
| STORAGE TEMPERATURE (°C) | - 30.0 ~ + 75.0 | |
| TERMINAL | PIN | |
| HOUSING MATERIAL | ABS | |
| WEIGHT (g) | 10.0 | |

* Value applying at rated voltage

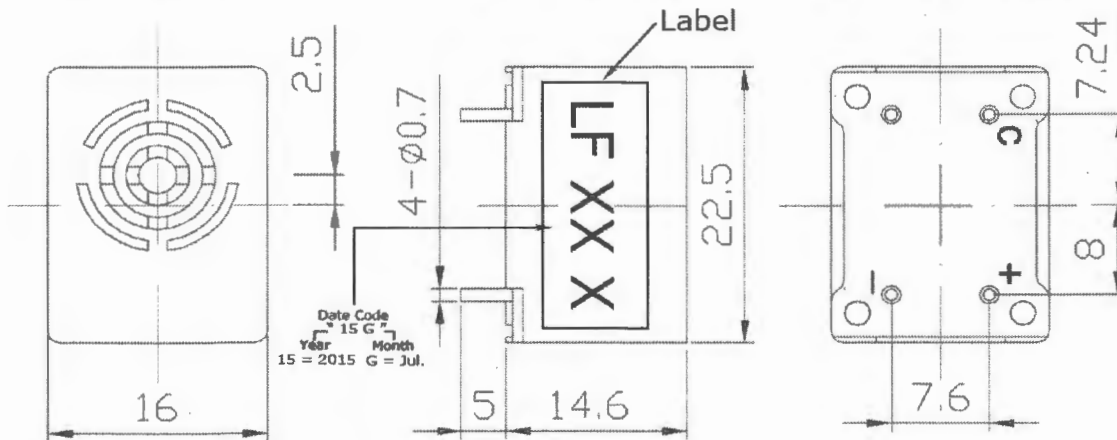
DIMENSIONS

UNIT : mm Tolerance : ± 0.5 mm

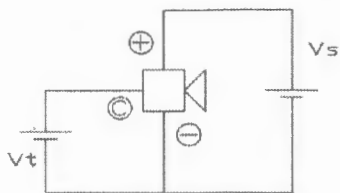
TOP VIEW

SIDE VIEW

BOTTOM VIEW



Coupled Circuit



Characteristics

| | | |
|----------|--------|------|
| Modify : | Date : | By : |
| | | |
| | | |

Approved By : FG
 Date : 23-Jul.-2015

Prepared By : LL
 Date : 23-Jul.-2015