

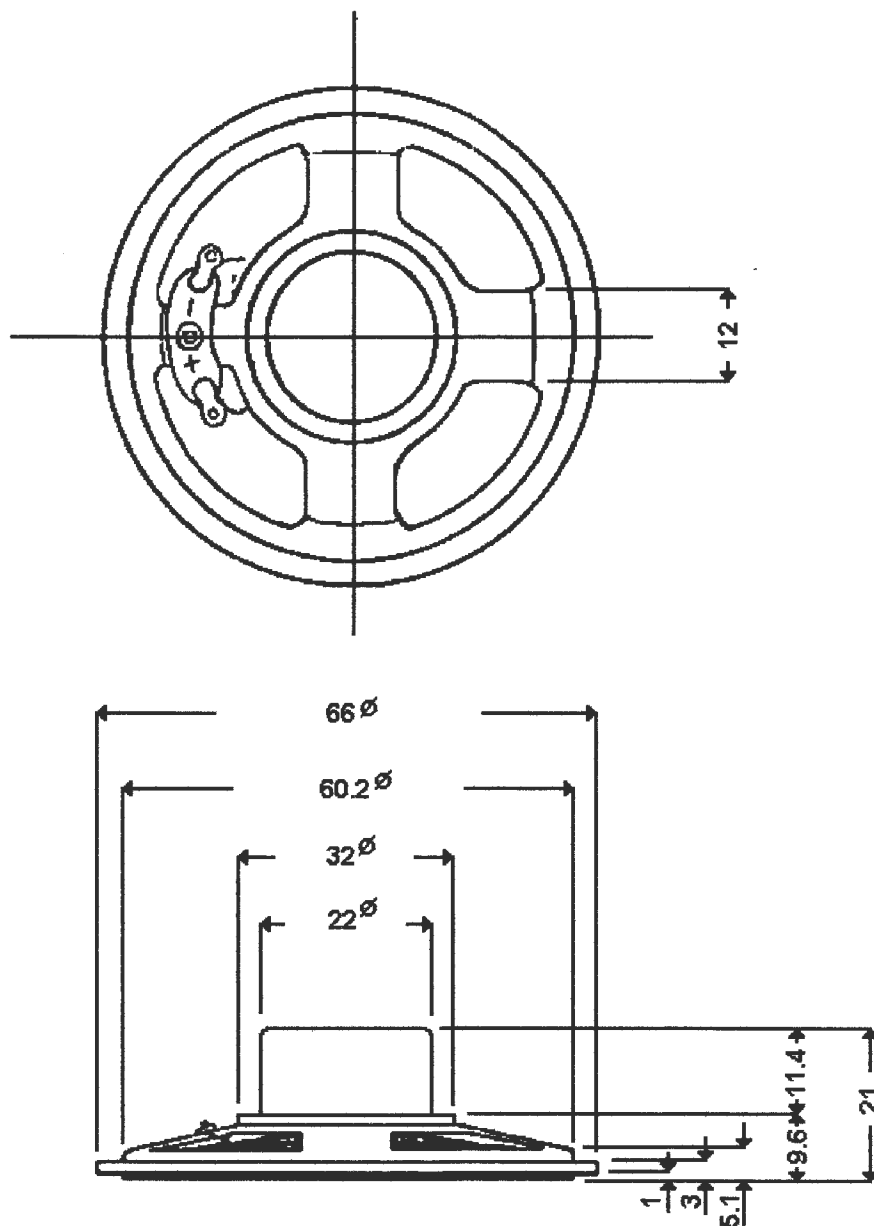
INTERVOX Speakers from International ©

215 McCormick Drive, Bohemia, NY 11716 (631)952-9595 Fax: (631) 952-9597 e-mail: oemsales@icc107.com

No. 215

ICC Part No.	S250RA	
1. Voice Coil Imp.	$8 \Omega \pm 15\%$	At 1000 Hz 1 Volt
2. Operation	Must be normal	Program Source 0.3W
3. Buzz & Rattles	Must be normal	Sin Wave 0.3W
4. Resonant Freq.	290 ± 40 Hz	Without Baffle
5. Output S.P.L.	86 ± 3 dB/W Mean Value at 0.5, 0.6, 0.8, 1.0 KHz	From 50cm Measurement 0.3W
6. Freq. Response	FO ~ 5000 Hz ± 10 dB	
7. Rated Freq. Response	Hz	
8. Rated Power Input	0.2W	
9. Max. Power Input	0.3W	
10. Load Test	After Test Meet Items 2 & 3	White Noise 0.3W 5 Hours
11. Heat Test	After Test Meet Items 2 & 3	$40^\circ \pm 2^\circ$ C 50% R.H. 48 Hours
12. Humidity Test		$40^\circ \pm 2^\circ$ C 90% R.H. 48 Hours
13. Distortion	5% Max.	Rated Power Input 1000 Hz
14. Total Flux	Maxwell	
15. Flux Density	6300 Gauss	
16. Magnet	Material: Rare Earth	Size: 13 x 10mm Weight: .35 oz.
17. Total Weight	1.51 oz.	
18. Baffle Opening	60mm	
19. Outside Diameter	66mm	(Eliminate Rim: 60.2mm)
20. Total Height	21mm	
21. Yoke Size	22 x 14.2 x 12.5mm	Outside Diameter of Seat: 32mm

INTERVOX Speakers from International ©



PART NO.: S250RA	UNIT: mm
SIZE: 66m/2.5"	TOLERANCE: ± 0.1

INTERVOX Speakers from International ©

Measuring Object: S250RA Measuring Condition: 1.55 V 0.3 W 0.5 M
Level Range: 60 dB Zero Level (Fundamental) : 60 dB X Axis Speed: 23 mm/sec
Impedance Range: _____ Ω Zero Level (Harmonic) : _____ dB Y Axis Speed: 1000 mm/sec

