



International Components Corporation

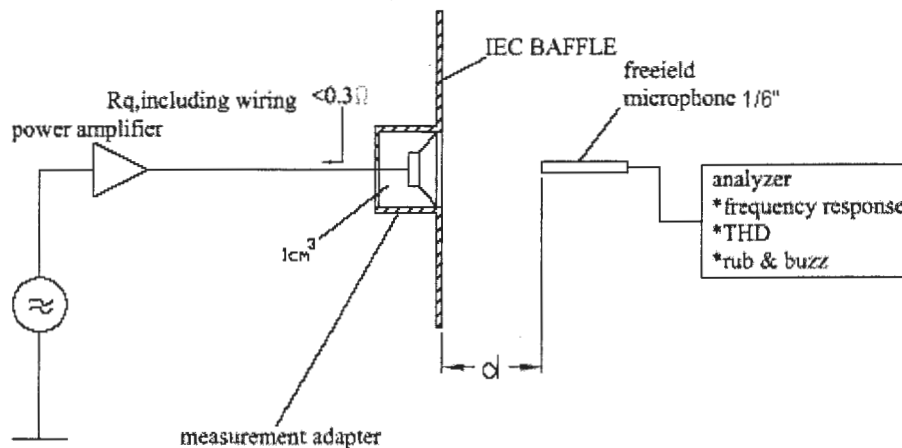
215 McCormick Drive, Bohemia, NY 11716

Tel: 631-952-9595 Fax: 631-952-9597 www.icc107.com

	MODEL:	SR35X10VN
2	Cone and edge type:	composite
3	Dimension & Weight	Outer Diameter 25 * 9 mm
		Baffle Opening 22.4* 6.6 mm
		Height Refer to drawing Weight Grams
4	Magnet	Materials NdFeB Size 17.9*4.4*1.1 mm
5.	Impedance	8 Ω ± 15 %,
6.	Power Rating	Normal 1.0 Watts Maximum 1.2 Watts Sine Wave in 1cc box
7.	Resonant Frequency	500 ± 20 % Hz in free air
		800 ± 20 % Hz in 1cc box
8.	Output Sound Pressure Level (S.P.L.)	91 ± 3 db At 2K Hz 1.0 Watt · 0.1 Meter in 1cc box (<u>With</u> baffle)
		94 ± 3 db 1.0 Watt · 0.1 Meter in 1cc box (<u>With</u> baffle)
		Average at 800 1000 1200 1500 Hz.
9.	Frequency Range	FO ~ 20000 Hz. Average SPL – 10 db.
10.	Distortion	5% Maximum At 1K Hz 1.0 Watt · 0.1 Meter in 1cc box
11	Abnormal Sound test	Must be Normal Tested By 2.83 Volts. Sine Wave in 1cc box
12	Load Test	Pink noise with HPF 2.83 Volts. (RMS.) 96 Hours. in 1cc box
13	Polarity	Diaphragm shall move Forward while Apply a Positive DC Signal to the " + " or " - " Marked " Terminal.
Above Measuring condition under temperature: 15~35°C R.H. 25 ~75%. According to standard GB/T12060.5-2011		
Mechanical and vibration test		
14	High Temperature	+ 60 ± 2 °C Humidity Random for 96 Hours. (GB2423.2-81)
15	Low Temperature	- 25 ± 2 °C Humidity Random for 96 Hours. (GB2423.1-81)
16	Humidity	+ 40 ± 2 °C Relative Humidity (RH) 90 ~ 95 % 96 Hours. (GB5170.18-87)
17	Vibration	Frequency 30 ± 15 Hz, Amplitude 1.5 mm for 3 Hours. (GB11606.8-89)
18	Drop test	75 CM free falling on Concrete floor, 10 times. (GB2423. 8-81)
After test leave speakers at room temperature for 1 hour, SPL shall not deviate by ± 3 db from pre-test Measurement, and meet above spec. item 6. 7. 8. 9. 10.		
19	Temperature Cycle test	- 25 ~ + 60 °C 4 Cycles Temperature test. (GB5170.18-87)
After test leave speakers at room temperature for 1 hour, SPL shall not deviate by ± 4 db from pre-test Measurement, and meet above spec. item 6. 7. 8. 9. 10.		
Please refer to next pages for more detailed testing method.		

Test method and User precaution.

1. Characteristics measured according to standard GB/T12060.5-2011
 - 1.1 Except other specified, measuring are under Temperature 15~35°C R.H. 25 ~75%
 - 1.2 Judgement condition Temperature 20 ±2 R.H. 63~67%
 - 1.3 .Product shelf life is valid for 12 months only.
2. Output Sound Pressure Level (S.P.L.) and distortion testing setup



3. Environment & Mechanical test:

3.1 High Temperature: GB2423.2-81

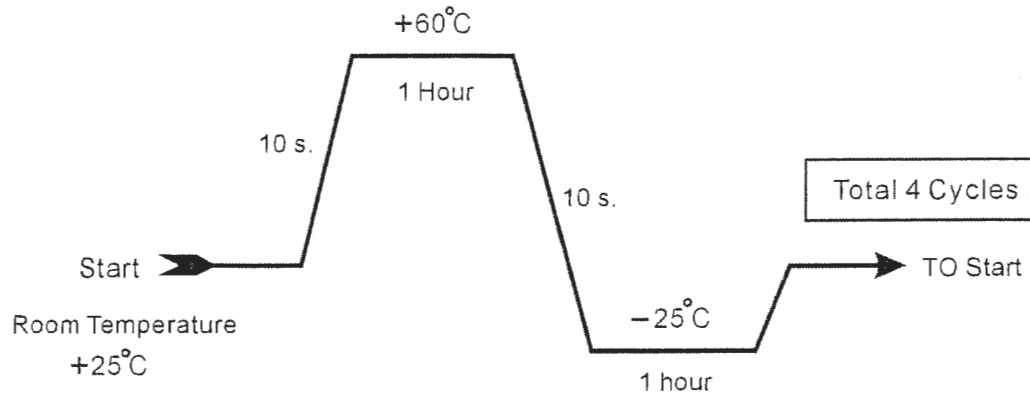
After exposure the speaker in the + 60 ± 2 °C chamber for 96 hours, then leave the speaker at room temperature for 1 hour, the SPL should not deviate by ± 3 db, and resonant frequency should not deviate by ± 50 Hz, compare with pre-test measurement.

3.2 Low Temperature: GB2423.1-81

After exposure the speaker in the -25 ± 2 °C chamber for 96 hours, then leave the speaker at room temperature for 1 hour, the SPL should not deviate by ± 3 db, and resonant frequency should not deviate by ± 50 Hz, compare with pre-test measurement.

3.3 Temperature cycle: GB5170.18-87

After exposure the speaker in the chamber, temperature cycle setting as below shows, SPL should not deviate by ± 4 db, and resonant frequency should not deviate by ± 80 Hz, compare with pre-test measurement.



3.4 Humidity: GB5170.18-87

After exposure the speaker in the $+40 \pm 2$ °C, relative humidity 90% ~ 95% chamber for 96 hours, then leave the speaker at room temperature for 6 hours, the SPL should not deviate by ± 3 db, and resonant frequency should not deviate by ± 50 Hz, compare with pre-test measurement.

3.5 Vibration: GB11606.8-89

Frequency 30 ± 15 Hz, Amplitude 1.5 mm for 3 Hours. After test, SPL shall not deviate by ± 3 db from pre-test measurement,

3.6 Load test: GB/T 9396-1996

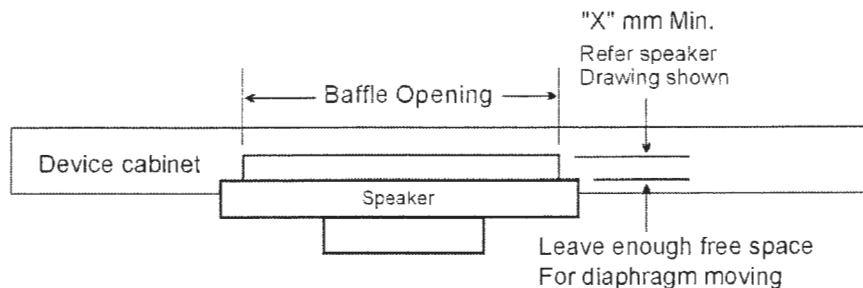
Speaker should not fail after apply 20 ~ 20K Hz Pink noise with HPF rated power input (RMS), 96 hours. After test, SPL shall not deviate by ± 3 db from pre-test measurement,

3.7 Drop test: GB2423. 8-81

75 cm free falling on concrete floor, 10 times. After test, SPL shall not deviate by ± 3 db from pre-test measurement,

4. Mounting precaution

In order to keep speaker work normally, there shall leave enough free space for diaphragm moving, minimum distance required is marked in speaker mechanical drawing.



5. Measuring & standard referenced

Abstract from GB/T12060.5-2011 and IEC 60268-5:2007 methods of measurement for main characteristics of loud speakers.

5.1 Rated sine voltage.

It is stipulated by manufacturer, sine signal voltage that make speaker work continuously in rated frequency range, but the speaker wouldn't be damaged heartily or mechanically.

The persist time of the voltage is 1 hour.

5.2 The rated sine power.

The rated sine power is corresponding with the rated sine voltage, its definition is U_s^2/R ,

U_s indicates the rated sin voltage, R indicates the rated impedance.

5.3 The rated noise power.

The rated noise power is corresponding with the rated noise voltage, its definition is U_n^2/R ,

U_n indicates the rated noise voltage, R indicates the rated impedance.

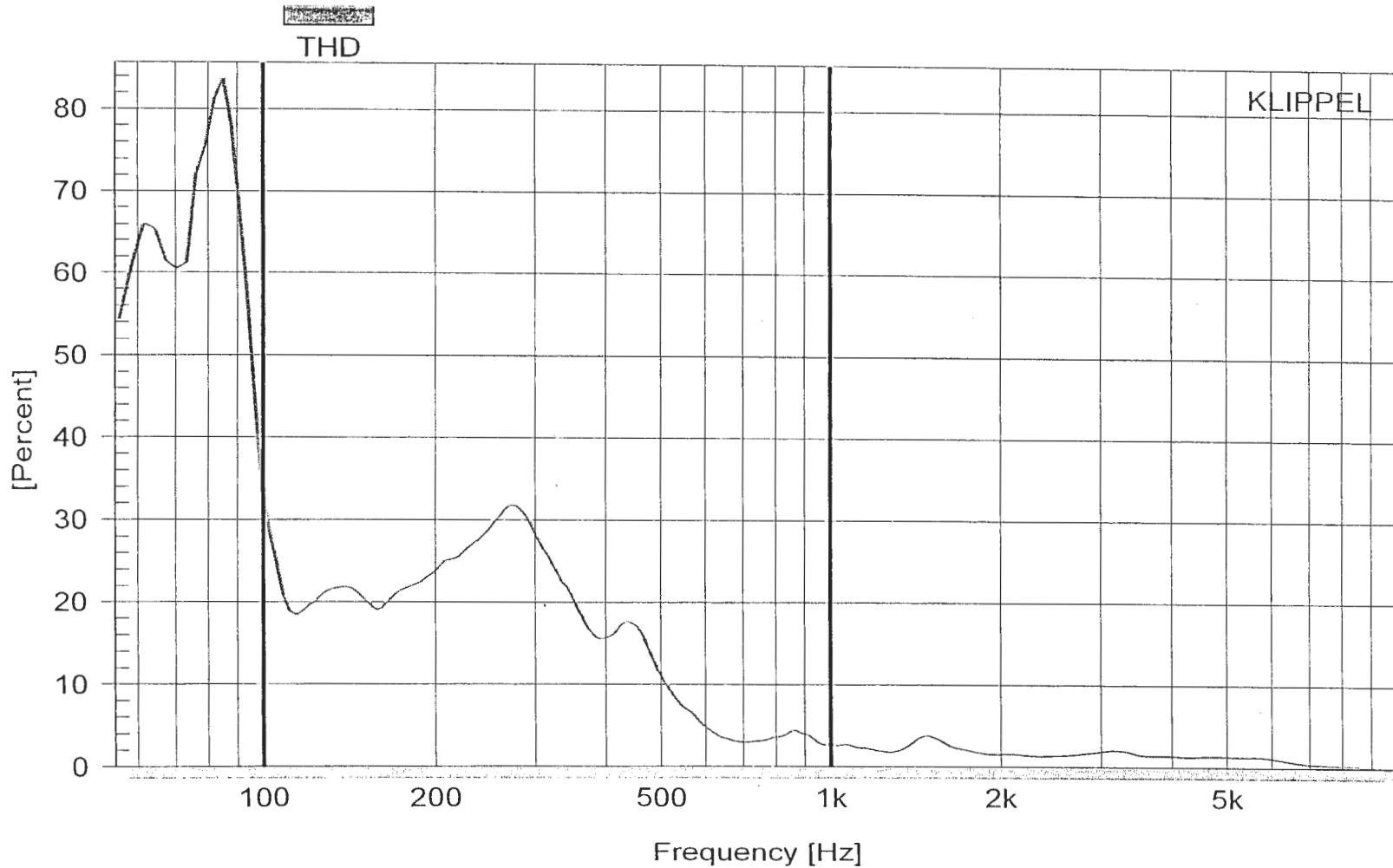


International Components Corporation

215 McCormick Drive, Bohemia, NY 11716

Tel: 631-952-9595 Fax: 631-952-9597 www.icc107.com

Measurement Condition: SR35X10VN + 1CC BOX + baffle
VOL : 2.83V [1W] DIS : 0.1 M



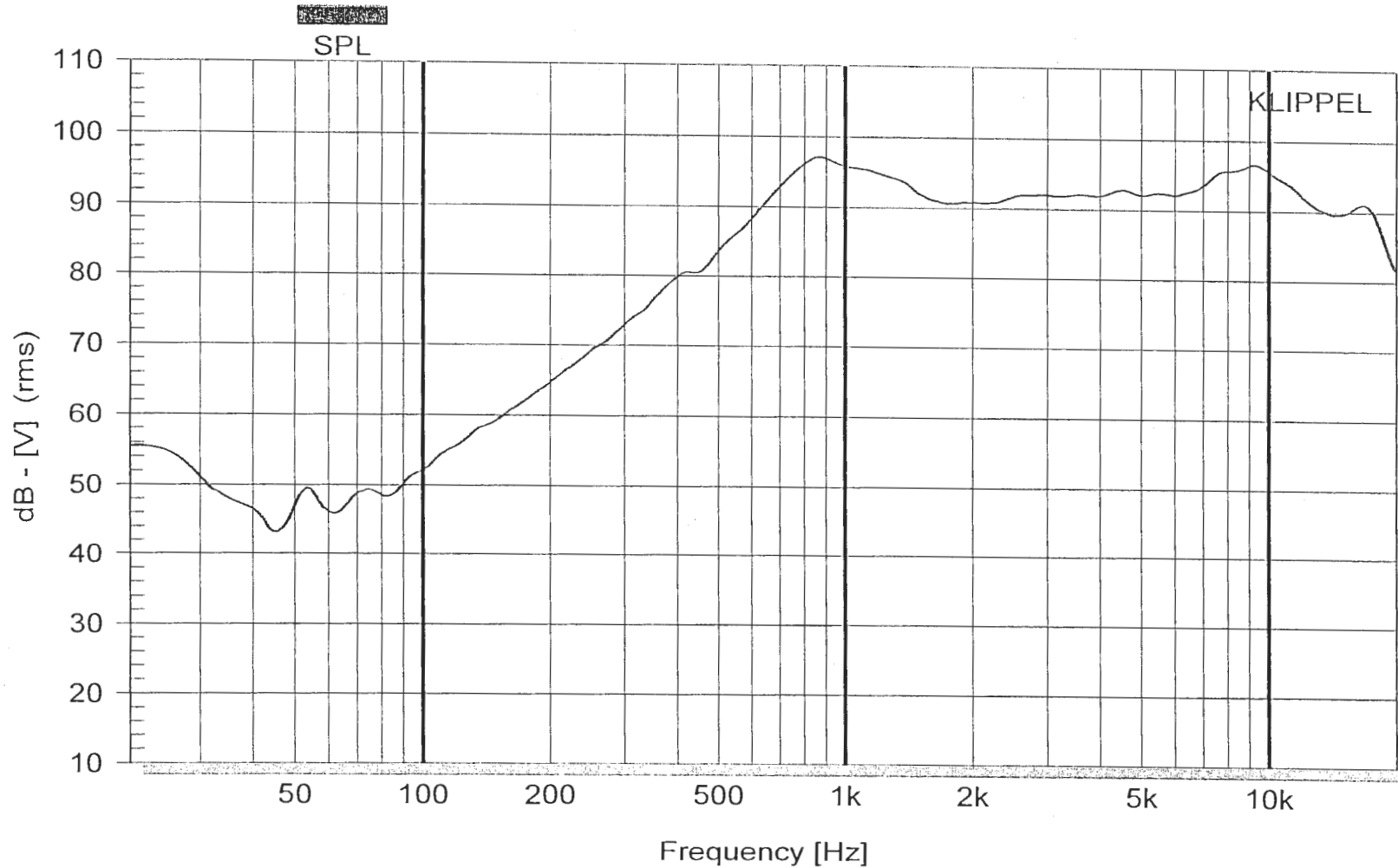


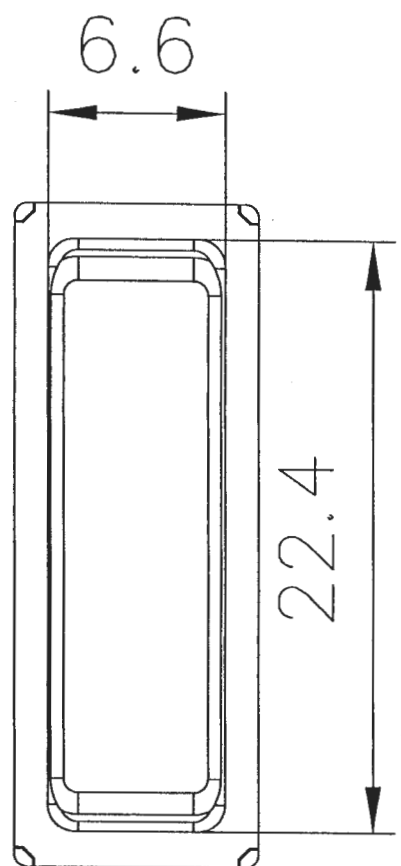
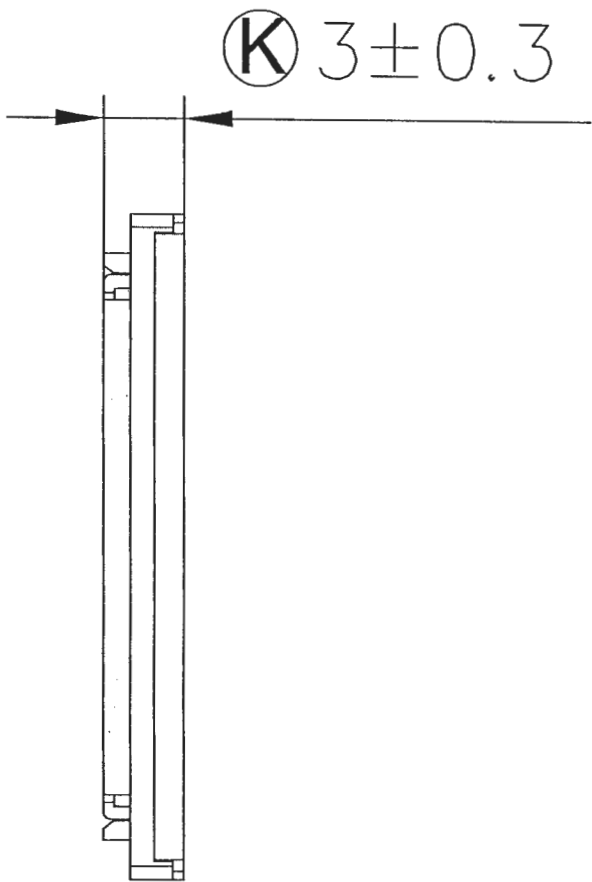
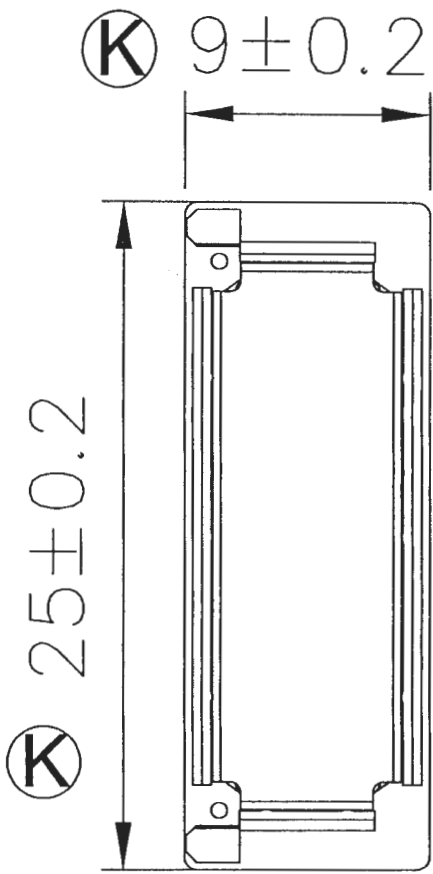
International Components Corporation

215 McCormick Drive, Bohemia, NY 11716

Tel: 631-952-9595 Fax: 631-952-9597 www.icc107.com

Measurement Condition: SR35X10VN + ICC BOX + baffle
VOL : 2.83V [1W] DIS : 0.1 M





RANGE	TOL				
0-8	±0.05	±0.1	±0.15	±0.2	±1
8-16	±0.1	±0.15	±0.2	±0.2	±2
16-24	±0.15	±0.2	±0.3	±0.3	±2
24-50	±0.2	±0.25	±0.3	±0.4	±3
50-100	±0.25	±0.3	±0.5	±0.5	±3
>100	±0.3	±0.4	±0.4	±0.8	±5

Ⓚ CRITICAL DIMENSIONS ENVIRONMENT REQUIREMENT:

CUSTOMER PN:

DATE: 30/03/15

MATERIAL:

COLOUR:

ITEM	DD/MM/YY	CONTENTS OF CHANGE	SPONSOR

INTERNATIONAL COMPONENTS CORPORATION!
 215 McCormick Drive, Bohemia, NY 11716
 Tel: (631) 952-9595 Fax: (631) 952-9597

SR35X10VN

Unit: mm

VER: 00

Appr.:



Scale: 1:1

CHK.:

Dwg.: 王子琳