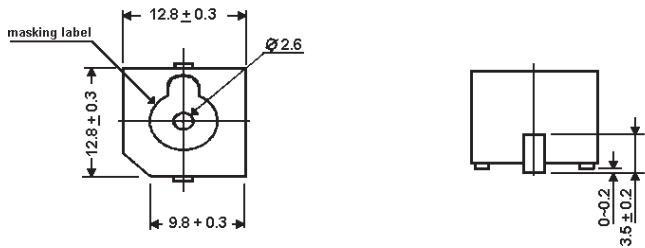
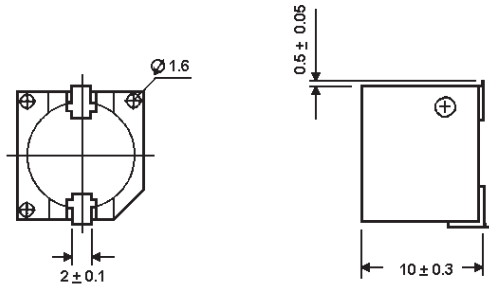


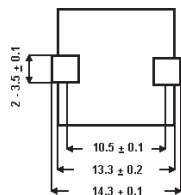
**SURFACE MOUNT
ELECTRO ACOUSTIC TRANSDUCER
with built in circuitry
BST1310SM-C SERIES**

Features:

- SMD mounting
- Built in oscillating circuit
- 5 Vdc or 12 Vdc



PCB LAYOUT



SPECIFICATIONS:

Type	BST1310SM-01-C	BST1310SM-05-C	BST1310SM-12-C
Rated Voltage (Vdc)	1.5	5	12
Operating Voltage (Vdc)	1 - 3	4 - 8	8 - 16
Rated Current (mA)	Max. 30	Max. 40	
Case Material and color	PPS Gray		
Sound Output 10cm (dB)	Min. 80	Min. 85	
Resonant Frequency (Hz)	2400 ± 400		
Operating Temperature (C)	- 40 ~ + 70		
Storage Temperature (C)	- 30 ~ + 80		
Weight (g)	2		

INTERVOX
International ©
International Components Corporation

215 McCormick Drive, Bohemia, NY 11716 Tel 631-952-9595 Fax 631-952-9597

Title: **Surface Mount
Electro Acoustic Transducer
with built in circuitry**

Tolerance: +/- 0.5mm Intervox Model # **BST1310SM-C SERIES** Rev.

Unit: mm Date: 12/5/06 Sheet 1 of 1